

Logix 5.0[®]

New Features and Users in the News – September 2013



Logistix Solutions

On-Demand Solutions for Logistics Professionals

Logix 5.0 is now even easier to use for Logistics Professionals who require deep functionality and have neither the time, budget or resources to maintain pricier, less intuitive solutions.

New Pool Consolidation logic helps shippers and 3PLs better manage the decision to ship freight direct or to consolidate freight at pool locations and ship via lower truckload rates.

Routing and Scheduling now includes Driver Scheduling optimization to make the best use of driver and vehicle resources.

As always, these new features come from listening to our users and providing continuous improvements to our software solutions.

Robert Camozzo

CEO
Logistix Solutions

www.logistixsolutions.com

(571) 426 5951

info@logistixsolutions.com

New Features and Users in the News – September 2013

In This Issue:

- **Fleet Optimization and Driver Scheduling** – A fast growing logistics services provider optimizes driver and vehicle resources to provide better service at lower cost for its customers.
- **Pool Consolidation vs Supplier Direct** – 3PLs are quickly adopting new capabilities to optimize freight either shipping direct or consolidating through optimally located pooling centers at lower cost.
- **International Geocoding** – China, Australia, Europe and Canada geocode data bases are added to Logix for quicker and more accurate data entry.



LOGISTICS SERVICES PROVIDER INTERSTATE DISTRIBUTORS USES LOGIX' NEW FLEET OPTIMIZATION AND DRIVER SCHEDULING FOR NEW BUSINESS DEVELOPMENT AND OPERATIONS PLANNING.

STEVE SEGER, INTERSTATE'S DIRECTOR OF DEDICATED ENGINEERING AND PRICING, STATES "OPTIMUM ROUTING, FLEET CONFIGURATIONS AND DRIVER SCHEDULES HELP INTERSTATE SUBMIT WINNING BIDS AT THE BEST MIX OF SERVICE AND COST."

DRIVERS ARE ASSIGNED TO MULTIPLE TRIPS ACROSS THE WEEK BASED ON DOT HOURS OF SERVICE AND OTHER CONSTRAINTS.

CONTACT INFO@LOGISTIXSOLUTIONS.COM OR 571.426.5951 FOR MORE INFORMATION.

3PL Optimizes Drivers and Fleet Resources for Winning Bids

Asset-based logistics services provider Interstate Distributors Co., with headquarters in Takoma, WA, and operations in Washington, Oregon, California and Virginia, routinely bids on new business requiring dedicated or consolidated fleet services, drivers, trucks and tight schedules that provide superior service.

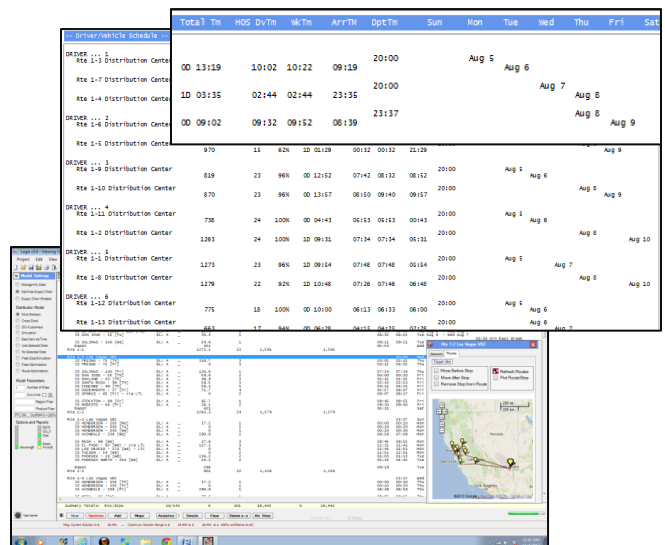
Interstate worked with Logistix Solutions in the development of a driver and vehicle scheduling optimization capability that:

- Balances routes across a weekly schedule based on preferred return to depot times and route distances.
- Assigns drivers to daily routes that honor DOT's Hours of Service rules and reduces the total number of drives and vehicles required.
- Meets vehicle capacity, equipment and size restrictions for each customer while optimizing load utilization.

Using Logix' Fleet Optimization option, Interstate sets up routes that meet its requirements for longer routes on certain days of the week and shorter routes as fillers on other days to provide the best use of fewer driver and vehicle resources.

The optimum routing and scheduling results, including route details such as duration, distances, and arrival/departure times at stops as well as at the depot, combine to produce a Driver Scheduling report that

shows driver route assignments, load utilization total route distances and times, as well as DOT Hours of Service expended or remaining.



New Features in Logix5.0

- Fleet Optimization and Driver Scheduling** – balances route schedules and driver assignments across the week to reduce the number of drivers and vehicles required based on all DOT rules and route constraints.

Using results from the Routing and Scheduling solution, Logix minimizes the total number of drivers and vehicles required based on arrival and departure dates and times from the depot as well as vehicle restrictions and DOT rules.

Driver/Vehicle Schedule	Distance	Quantity	Loads	Total Tn	Hrs DVTn	WkTn	ArrTn	DptTn	Sun	Mon	Tue	Wed	Thu	Fri	Sat
DRIVER ... 1 Rte 1-3 Distribution Center	901	22	92%	00 13:19	10:02	10:22	09:19	20:00		Aug 5	Aug 6				
Rte 1-7 Distribution Center	1069	24	100%	1D 03:35	02:44	02:44	23:35	20:00					Aug 7	Aug 8	
Rte 1-4 Distribution Center	901	10	42%	00 09:02	09:32	09:52	06:39	23:37					Aug 8	Aug 9	
DRIVER ... 2 Rte 1-6 Distribution Center	970	22	92%	1D 01:49	00:32	00:32	21:49	20:00		Aug 5	Aug 6				
Rte 1-5 Distribution Center	970	15	62%	1D 01:29	00:32	00:32	21:29	20:00					Aug 8	Aug 9	
DRIVER ... 3 Rte 1-9 Distribution Center	819	23	96%	00 12:52	07:42	08:32	06:52	20:00		Aug 5	Aug 6				
Rte 1-10 Distribution Center	870	23	96%	00 13:57	08:50	09:40	09:57	20:00					Aug 8	Aug 9	
DRIVER ... 4 Rte 1-11 Distribution Center	738	24	100%	00 04:43	05:53	05:53	00:43	20:00		Aug 5	Aug 6				
Rte 1-2 Distribution Center	1263	24	100%	1D 09:31	07:34	07:34	05:31	20:00					Aug 8	Aug 10	
DRIVER ... 5 Rte 1-1 Distribution Center	1273	23	96%	1D 09:54	07:48	07:48	05:54	20:00		Aug 5		Aug 7			
Rte 1-8 Distribution Center	1279	22	92%	1D 10:48	07:26	07:46	06:48	20:00					Aug 8	Aug 10	
DRIVER ... 6 Rte 1-12 Distribution Center	775	18	100%	00 10:00	06:13	06:33	06:00	20:00		Aug 5	Aug 6				
Rte 1-13 Distribution Center	661	17	94%	00 06:28	04:15	04:25	02:28	20:00			Aug 6	Aug 7			

The Logix' editor can be used to manually assign routes to different days or a later departure or return time to further refine the weekly route and driver schedules according to user needs.

- Pool Consolidation vs Supplier Direct** – optimizes freight transportation selecting freight consolidation through optimally located pool facilities and local delivery consolidation centers vs direct shipments.

Logistics service providers are using optimization technology to offer highly efficient transportation solutions to save costs for their customers.

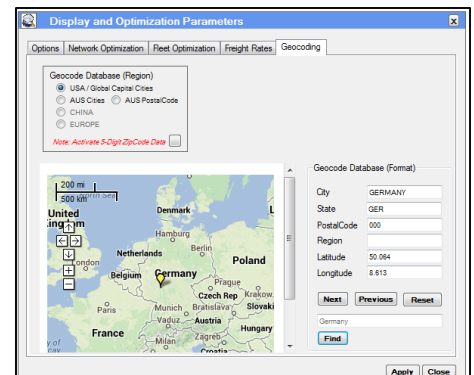
Site Name	Prft/Region	Distance	Quantity	Trans\$	Whs/Prft\$	Total\$	Msg	ProLogix Supply Chain D
SITE LOCATION - Coxsackie NY	A	-	-	-	-	-	-	-
» 12060-ALPHARETTA	A	516	718	26	0	26		
+ Indianapolis PCC	A	820	718	24	0	24		
» 16740-CHARLOTTE	A	520	218	11	0	11		
+ Indianapolis PCC	A	820	218	7	0	7		
» 19820-WIXOM	A	288	1,310	19	0	19		
+ Indianapolis PCC	A	820	1,310	43	0	43		
» 26420-HOUSTON	A	1,064	450	48	0	48		
+ Indianapolis PCC	A	820	450	15	0	15		
» 34980-SMYRNA	A	324	516	12	0	12		
+ Indianapolis PCC	A	820	516	17	0	17		
» 46340-TYLER	A	893	550	34	0	34		
+ Indianapolis PCC	A	820	550	18	0	18		
» 48660-HENRIETTA	A	964	556	38	0	38		
+ Indianapolis PCC	A	820	556	18	0	18		
» 19100-IRVING	A	946	150	14	0	14		
+ Indianapolis PCC	A	820	150	5	0	5		
TOTAL (Inbound)	A	-	4,468	349	0	349		
» Hudson Valley NY	A	-	98	150	1	150		» 13100-TRV @
35300-WALLINGFORD 1	A	85	150	1	0	1		» 48660-HEN @ 53
14860-DANBURY 15	A	85	216	1	0	1		» 34980-SMY @ 55
14460-LOWELL 143	A	160	251	2	0	2		» 16740-CHA @ 48
39300-ACUSHNET 145	A	191	170	3	0	3		» 12060-ALP @ 92
35620-SECAUCUS 152	A	133	355	7	0	7		» 19820-WIX @ 92
37980-CINNAMINSON 153	A	212	745	14	0	14		» 19820-WIX @ 79
35620-BELLEVILLE 154	A	133	565	7	0	7		» 19820-WIX @ 38
37980-WRIGHTON 155	A	199	450	6	0	6		» 26420-HOU @ 49
24020-FORT EDWARD 162	A	78	340	2	0	2		» 48660-HEN @ 49
10580-TROY 163	A	36	265	1	0	1		» 34980-SMY @ 36
35620-HASTINGS ON HUDSON 164	A	114	48	1	0	1		» 16740-CHA @ 48
35620-HUNTINGTON STATION 165	A	133	550	4	0	4		» 46340-TYL @ 33
39300-WARWICK 177	A	158	363	8	0	8		» 12060-ALP @ 34
TOTAL (Outbound)	A	-	1,730	4,468	57	0	57	» Direct Cost 95

Logix incorporates individual LTL freight rates, line haul costs and delivery charges as well as pool facility handling fees and other costs to optimize the decision whether to ship direct or to pool freight at a lower total cost.

Compare LTL Direct vs. Consolidated Freight Costs for each shipment

- International Geocoding** - Logix now provides geocoding at the city or town level for Canada, China, Europe and Australia in addition to 3- and 5-digit and city level geocoding in the United States.

Users can also provide geocoding for individual sites or upload geocodes for any location directly into Logix for greater ease of use and accuracy.



LOGISTIX SOLUTIONS – Technology for Logistics Professionals

Logistix Solutions was established in 2006 as a software and consulting company to provide premier technology solutions and in-depth industry knowledge for logistics professionals. We offer award-winning, on-demand Supply Chain Planning and Execution applications at a revolutionary value for rapid ROI and benefit realization.

- ✚ *Supply Chain Planning and Execution (SCP&E) software solutions offered:*
 - *Distribution Network Design and Supply Chain Optimization*
 - *Sourcing and Procurement Optimization*
 - *Routing and Scheduling Fleet Optimization*
 - *Transportation Resource Scheduling and Execution*
- ✚ *Support, training and consulting services provided by experienced supply chain practitioners and logistics software experts.*

Based on extensive development working with Fortune 1000 companies, Logistix Solutions provides full-featured, on-demand supply chain solutions and consulting services for retailers, manufacturers, third party logistics providers, consultants, food and beverage and other distributors to support strategic planning and logistics execution requirements.

Each year, the editors of Food Logistics, Inbound Logistics and Supply Chain Executive recognize the top technology and solution providers that help distributors and manufacturers to better manage their supply chains and reach their business goals.

This year, Logistix Solutions was again recognized as a recipient of the Top 100 Software and Services Providers for 2013. We thank all our customers for this special honor.



For more information on the Logistix Solutions suite of products, visit our website at www.logistixsolutions.com or contact Logistix Solutions at 571.426.5951 or e-mail info@LogistixSolutions.com.